

The Lady is a Tramp

Arr. Bruno Bizzarri

R. Rodgers

♩ = 164

♩
C

mp

Ebm7

Dm7

Tromba in Do



I get too hun - gry for din - ner at eight,
I don't like crap - games with bar - ons and earls,

Basso acustico



Batteria



mp

4

G7

C

Ebm7

Dm7

G7

Tr. Do

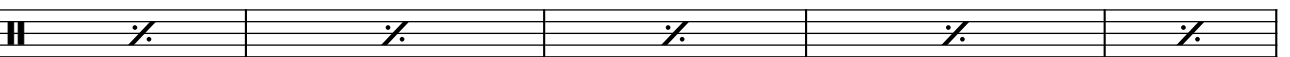


I like the the - atre but nev - er come late.
won't go to Har - lem in er - mine and pearls.

Basso



Batt.



9

C

Gm

F

Fm

C

A7

Tr. Do

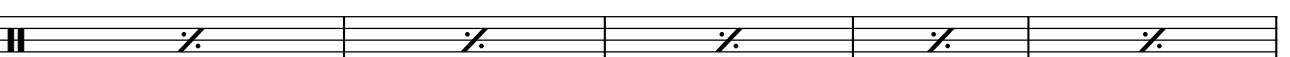


I nev - er both - er with peo - ple I hate. That's why the
Won't dish the dirt with the rest of the girls. That's why the

Basso



Batt.



14

Dm7

G7

1. C

A7

Dm7

G7

2. C

C7

Tr. Do



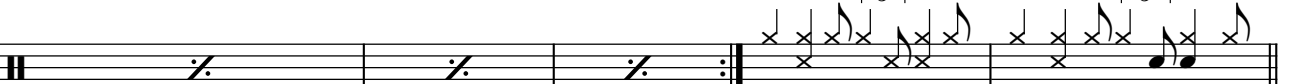
la - dy is a tramp.
la - dy is a tramp.

I like the

Basso



Batt.



19 Fmaj7 G7 Em7 Am Dm7

Tr. Do *mf*
free, fresh wind in my hair life with-out care.

Basso

Batt. *mf*

Detailed description: This block contains the first system of music, measures 19 through 23. The top staff is the vocal line in treble clef, starting with a mezzo-forte (*mf*) dynamic. The lyrics are "free, fresh wind in my hair life with-out care." The chords above the staff are Fmaj7, G7, Em7, Am, and Dm7. The middle staff is the bass line in bass clef, providing harmonic support. The bottom staff is the bass drum part, featuring triplets of eighth notes in measures 19 and 20, followed by rests in measures 21, 22, and 23.

24 G7 C A7 D7 G7 C Ebm7

Tr. Do
I'm broke, it's oke. Hate Ca-li-for - nia, it's

Basso

Batt.

Detailed description: This block contains the second system of music, measures 24 through 28. The top staff is the vocal line in treble clef with lyrics "I'm broke, it's oke. Hate Ca-li-for - nia, it's". The chords above the staff are G7, C, A7, D7, G7, C, and Ebm7. The middle staff is the bass line in bass clef. The bottom staff is the bass drum part, featuring triplets of eighth notes in measures 25 and 26, and rests in measures 24, 27, and 28.

29 Dm7 E7 Am7 D7 G7 C D.S. al Coda G7

Tr. Do *f*
cold and it's damp. That's why the la - dy is a tramp.

Basso

Batt.

Detailed description: This block contains the third system of music, measures 29 through 34. The top staff is the vocal line in treble clef with lyrics "cold and it's damp. That's why the la - dy is a tramp." The chords above the staff are Dm7, E7, Am7, D7, G7, C, and D.S. al Coda G7. The middle staff is the bass line in bass clef. The bottom staff is the bass drum part, consisting of rests in all six measures.

35 C

Tr. Do

Basso

Batt.

Detailed description: This block contains the fourth system of music, measures 35 through 38. The top staff is the vocal line in treble clef. The middle staff is the bass line in bass clef. The bottom staff is the bass drum part, featuring triplets of eighth notes in measures 35 and 36, followed by rests in measures 37 and 38.